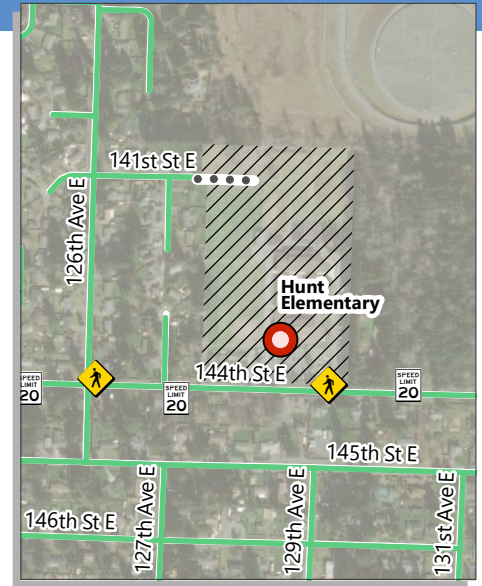
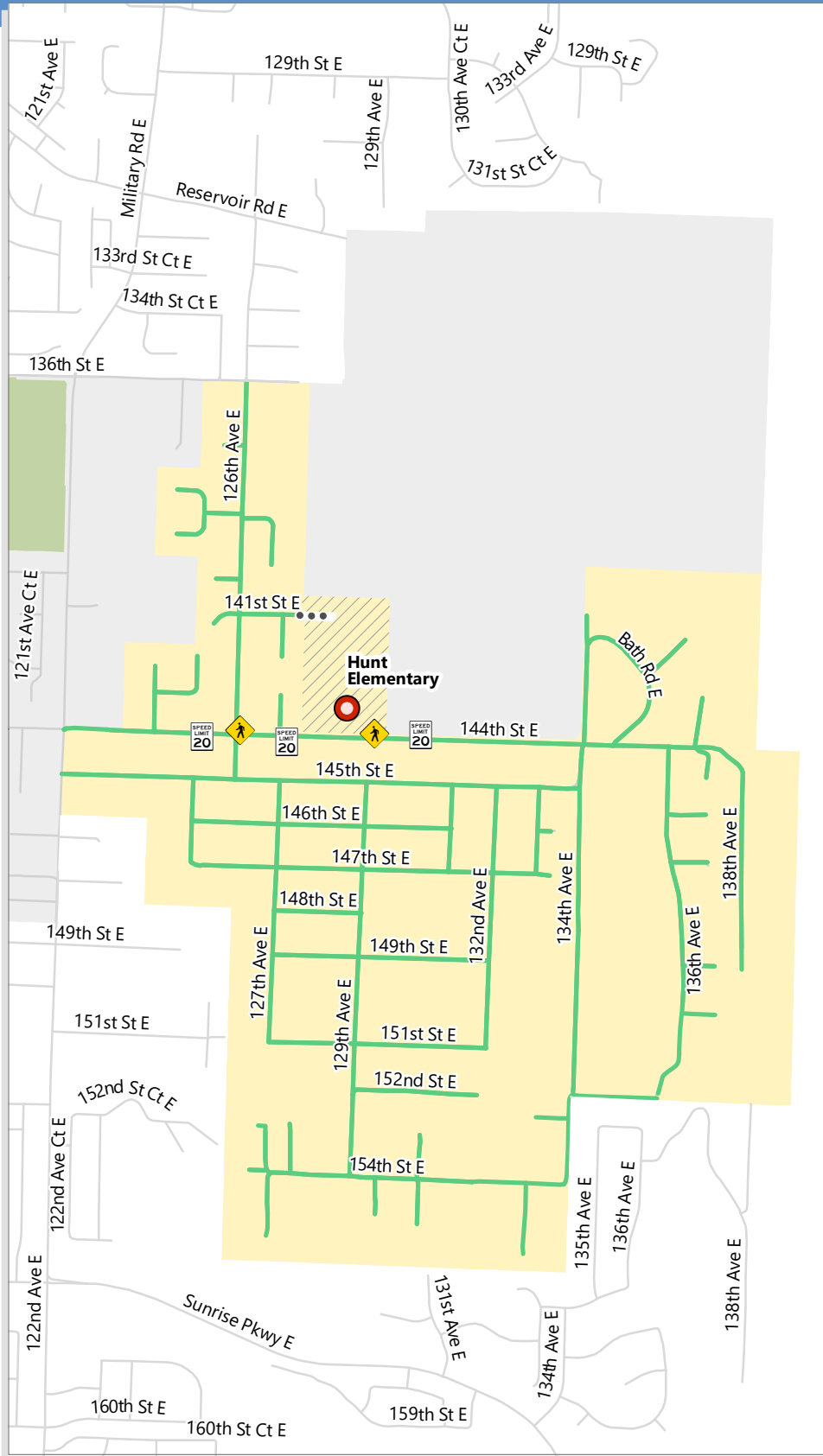




School Walking Routes



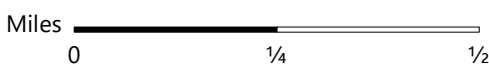
Hunt Elementary



- School
- School speed zone
- Walk route with paved pathway
- Walk route
- Railroad
- Pedestrian pathway
- Attendance area
- School property
- Crosswalk supervision
- Park
- Walk zone

The school walk map has been created in consultation with the Washington State School Walk and Bike Routes: A Guide for Planning and Improving Walk and Bike to School Options for Students (February 2015) and the Washington State School Administrator's Guide to School Walk Routes and Student Pedestrian Safety (July 2003).

Inquiries regarding student transportation, including safe routes to schools, may contact the Puyallup School District Transportation Department 253-841-8775 or visit https://www.puyallup.k12.wa.us/departments/transportation_services



Walk And Roll Safely to School!

The Puyallup School District encourages parents and students to use this map to explore options for traveling between home and school. Choose the most appropriate option based on your knowledge of route conditions and the specific needs and experience level of your student.

Tips for Walking Safely to School

Walking is fun, but you need to be safe while doing it. Follow these tips to make sure you get to and from school without any problems.

Choosing a route



- Look for routes to walk or roll that are separated from traffic. Choose sidewalks or paths wherever possible, even if that means the trip will take a little longer.
- If there are no sidewalks or paths, walk as far from motor vehicles as possible, on the side of the street facing traffic.

Have fun, walk together



- Younger children should always walk with an adult, and older children should walk with a friend when possible.
- Pay attention. When you are near the street, don't push, shove, or chase each other. Don't be distracted by your phone or headphones.
- Never hitchhike or take rides from people not arranged by your parents.
- Talk to your parents and teacher about any bullying that may happen during your walk.

Be safe, be seen



- Remember, drivers may not be able to see you well. Always wear bright-colored clothes and if it is dark or hard to see, carry flashlights or wear reflective gear.
- Watch out for cars and trucks at every driveway and intersection on your walk to school. Look for drivers in parked cars. They may be getting ready to move.

Cross the street safely

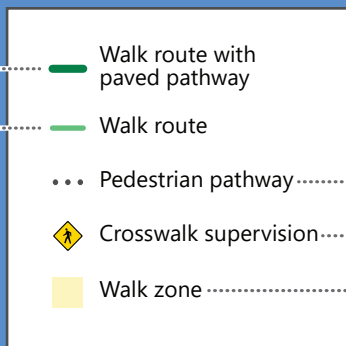


- Try to cross as few streets as possible. When you must cross, try to do so where there are traffic signals, stop signs, crossing beacons, school crosswalks, or crossing guards.
- When you reach an intersection, look left, right, and left again before crossing.
- Walk, don't run across the street, and follow the instructions of crossing guards and school patrol.

Map Legend Definitions

Walk route with paved pathway: Sidewalks and other hard surface pathways with horizontal and/or vertical separation from vehicular traffic on at least one side of a street. Recommended route, where available.

Walk route: a walk path along a road shoulder area. Includes edge of paved roadway on low volume residential roads.



Pedestrian pathway: a pathway where vehicle access is restricted.

Crosswalk supervision: Location where adult and/or student crosswalk supervision is provided during school arrival and/or school dismissal.

Walk zone: The walk area of the school, where school bus stops are not typically provided, following Puyallup School Board Policy 6600

