

A Guideline to Quarantine Exceptions

For close contacts (CC) who are asymptomatic and have not tested positive for COVID-19:

What exceptions do they qualify for?	Exposure Location		
	Outside of School	Classroom	Bus, lunch area, or other school areas
Fully vaccinated	No quarantine	No quarantine	No quarantine
Positive within 90 days and no longer infectious	No quarantine	No quarantine	No quarantine
Pooled testing participant	*** Quarantine	*Community quarantine. May attend school-based actives.	*Community quarantine. May attend school-based actives.
School endorses mandatory masking policy, exposure was 3-6', and both CC and Covid+ case are students	*** Quarantine	**Community & activity quarantine. May attend school-day hours.	*** Quarantine
None	*** Quarantine	*** Quarantine	*** Quarantine

*May attend all school and school-affiliated activities, but must quarantine from non-school activities.

**May attend class and other school-day events, but must quarantine from activities outside of the school day.

***Quarantine: Must remain home. Interaction with members of household only; no interaction outside of home.

Current Screening Tools

Regional School Unit 22

Home Health Screening Questionnaire
Available on the RSU 22 website
www.rsu22.us

Northern Light Healthcare Systems
NLH COVID Sports Checker
Available at www.northernlighthealth.org/Questionnaire/COVID-Sports-Checker

QUESTIONS?

If you have questions regarding the Pooled Testing Program, please contact Brittany Layman, Health and Wellness Coordinator at blayman@rsu22.us

REGIONAL SCHOOL UNIT 22
24 Main Road North
Hampden, Maine 04444
207-862-3255

COVID-19 POOLED TESTING INFORMATION

THE BENEFITS OF POOLED TESTING



Why have pooled testing in school?

When students, teachers, and staff get tested for COVID-19 every week we can:

- ✓ Find infections
- ✓ Isolate infections
- ✓ Prevent spread



HOW DOES POOLED TESTING BENEFIT RSU 22?

Thank you for your continued partnership as we continue to manage COVID-19 in our school buildings. In an effort to prevent the spread of COVID-19 in school, RSU 22 has worked closely with the Maine Department of Education (MDOE) to implement a free, weekly COVID-19 pooled testing program for all RSU 22 students and staff for the 2021-2022 school year.

WHAT IS POOL TESTING?

Pooled testing involves collecting several individual test swabs together in one “pool” and then testing the pool for COVID-19. The approach allows us to test a large number of individuals at once and regularly test our school community for COVID-19.

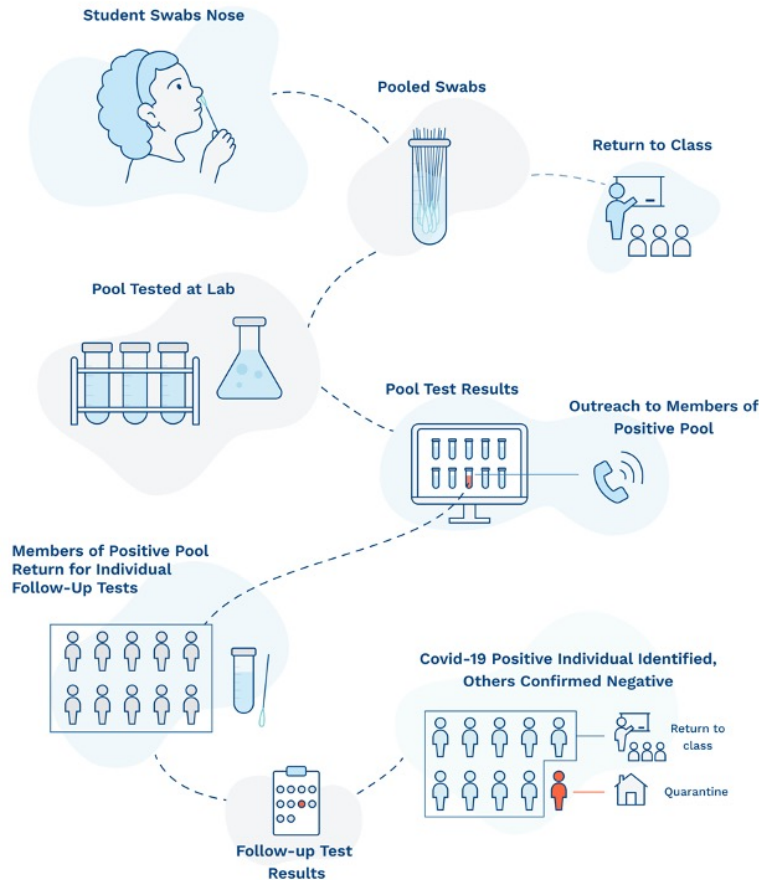
Pooled testing is a weekly PRC test that is performed using a shallow, nasal self-swab. RSU 22 tests all participating students and staff on Tuesday morning; and school health teams receive pooled testing results within 48 hours.

Pooled testing participants are **exempt from school-based quarantine***, if identified as a close contact to a positive COVID case at school.

WHAT HAPPENS NEXT?

If the result of a pool is negative, all individuals in that pool are presumed negative for COVID-19.

If the result of a pool is positive, all individuals in that pool will be tested at school using the Abbott BinaxNOW Rapid Antigen Diagnostic Test.



You will be notified if your student requires follow-up testing and we will report all follow-up testing to the Maine CDC via the Redcap reporting system.

WANT TO PARTICIPATE?

We are excited to offer pooled testing as another mitigation strategy for our school community.

To enroll your student in the Pooled Testing Program including consent to test, consent for follow-up testing using the Abbott BinaxNOW Rapid Antigen test, and consent to share follow-up test result information with the Maine CDC, please complete a consent. **Consent forms are available at each buildings' Main Office and on the RSU 22 website (www.rsu22.us).**

THANK YOU!

We are extremely grateful to you - our students, staff and families. Your continued flexibility and resilience as we navigate the school year is truly appreciated.

**The Pooled Testing Quarantine Exemption applies ONLY to school and school-based activities. Community quarantine requirements still apply.*